



Arizona Society of Echocardiography  
11397 N 109th Way, Scottsdale, AZ 85259

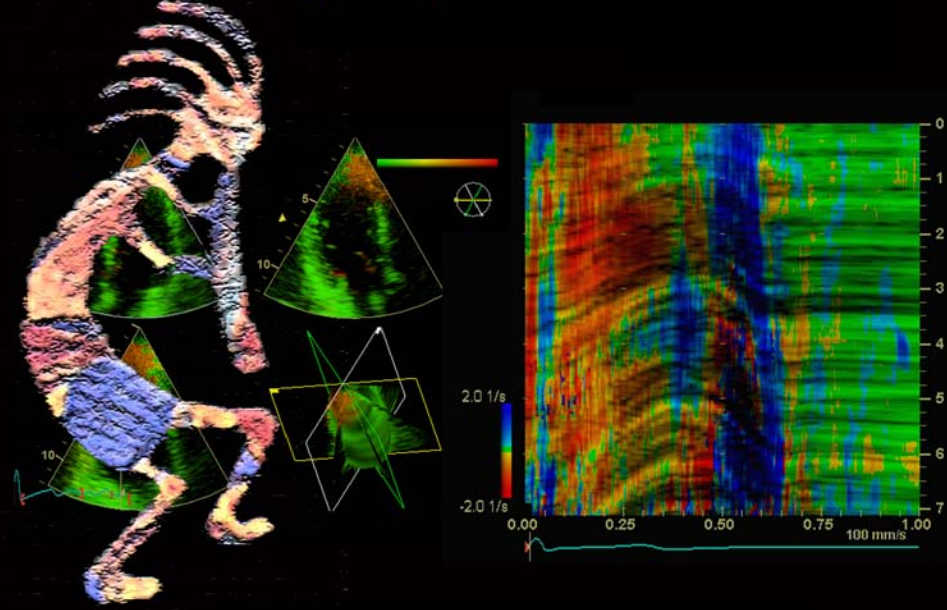
# 2nd Annual Echocardiography Symposium

*visit us on the web#*

*[www.azse.org](http://www.azse.org)*



## 2nd Annual Echocardiography Symposium



January 22nd, 2005  
Phoenix Airport Marriott  
Phoenix, AZ

## PROGRAM OVERVIEW

The symposium is designed for clinicians and sonographers who are actively involved in the practice of echocardiography. The symposium will consist of lecture and workshop sessions designed to introduce relevant clinical issues, provide a comprehensive review in state-of-the-art echocardiography applications and techniques, and encourage discussion by the presenters and the audience. Topics covered will incorporate recent technology advances in echocardiography including 4-D imaging, parametric Doppler modalities, contrast and stress echocardiography, assessment of hemodynamics, pediatric and congenital echocardiography with emphasis on their application to clinical practice. Upon completion of this program, attendees should be able to:

- Recognize the important role of echocardiography in the complex assessment of hypertrophic cardiomyopathy.
- Become familiar with recent advances in cardiac ultrasound instrumentation and preview future development directions.
- Discuss the current and future use of echocardiography in the assessment of pediatric and congenital abnormalities.
- Appraise the current and potential clinical uses of contrast echocardiography.
- Recognize the impact of sonographer injury and learn ways to prevent and minimize them.
- Become familiar with the echocardiography laboratory accreditation requirements and process and identify available resources.

## CME ACCREDITATION

The Arizona Society of Echocardiography is accredited by the Society of Medical Diagnostic Sonography (SDMS) to provide continuing education credits to sonographers.

The Mayo Clinic is accredited by the Accreditation Council for Continuing Medical Education to provide continuing medical education to physicians.

In accordance with the ACCME Standards for Commercial Support and the policy of The Arizona Society of Echocardiography and The Mayo Clinic, any faculty relationship with the distributors and manufacturer(s) of any commercial product(s) which could be perceived as a real or apparent conflict of interest will be disclosed in detail at the time of the meeting. This symposium is being funded by educational grants from various commercial organizations. A complete list of commercial supporters and contributors will be published in the symposium syllabus.

## LOCATION AND REGISTRATION

The symposium will be held Saturday, January 22<sup>th</sup>, 2005 at the Phoenix-Airport Marriott, 1101 N 44th Street, Phoenix, AZ 85008; Meeting site phone: 602-273-7373.

The registration fee is \$50 for all attendees. The fee will be **waived** to all 2005 AzSE members in good standing. The registration fee includes admission to all sessions and exhibits, syllabus and materials, continental breakfast, and break refreshments.

Advance registration **encouraged**. Limited onsite registration may be available.

## INVITED FACULTY

*Christopher Appleton, MD, FACC*  
Professor of Medicine, Mayo Medical School; Chair, Division of Cardiovascular Diseases, Mayo Clinic, Scottsdale, AZ

*Joan Baker, MSR, RDMS, RDCS*  
Director of Marketing, Sound Ergonomics, LLC, Kenmore, WA; Founder and Past-president, SDMS

*Steven Lester, MD, FACC\**  
Assistant Professor of Medicine, Mayo Medical School; Director, Echocardiography Laboratories, Mayo Clinic, Scottsdale, AZ

*John Lynch, MD, FACC\**  
Assistant Professor of Medicine, Mayo Medical School; Director, Cardiac Rehabilitation Program, Mayo Clinic, Scottsdale, AZ

*Michael Mastela, BSEE*  
Manager, Strategic & Luminary Accounts Americas, GE Medical Systems Milwaukee, WI

*Gail Size, BS, RDCS, RVT*  
President, Inside Ultrasound Inc., Pearce, AZ

*Dylan Taylor, MD, FRCPC, FACC*  
Professor of Medicine, Division of Cardiology, University of Alberta, Alberta, Canada

*Manni Vannan, MBBS*  
Professor of Medicine, Associate Chief of Cardiology, University of California Irvine Irvine, CA

\*PROGRAM DIRECTORS

## PROGRAM SCHEDULE

8:00 a.m.	Registration and Continental Breakfast
8:25 a.m.	Welcome <i>Drs. John Lynch and Steven Lester</i>
8:30 a.m.	Hypertrophic Cardiomyopathy <i>Dr. Christopher Appleton</i>
9:15 a.m.	Advances in Ultrasound Instrumentation <i>Mr. Michael Mastela</i>
10:00 a.m.	Refreshment Break – Visit Exhibits
10:30 a.m.	Pediatric and Adult Congenital Echocardiography <i>Dr. Dylan Taylor</i>
11:15 a.m.	Contrast Echocardiography <i>Dr. Mani Vannan</i>
12:00 p.m.	Lunch Break – Visit Exhibits
1:15 p.m.	Sonographer Injury Workshop <i>Ms. Joan Baker</i>
2:15 p.m.	Refreshment Break
2:30 p.m.	Lab Accreditation Workshop <i>Ms. Gail Size</i>
3:30 p.m.	Closing Remarks - <i>Drs. Lester and Lynch</i> Program Evaluation, CME credits, and Adjournment

**For more information and registration visit our website at [www.azse.org](http://www.azse.org), or contact us directly at 602-599-5008.**